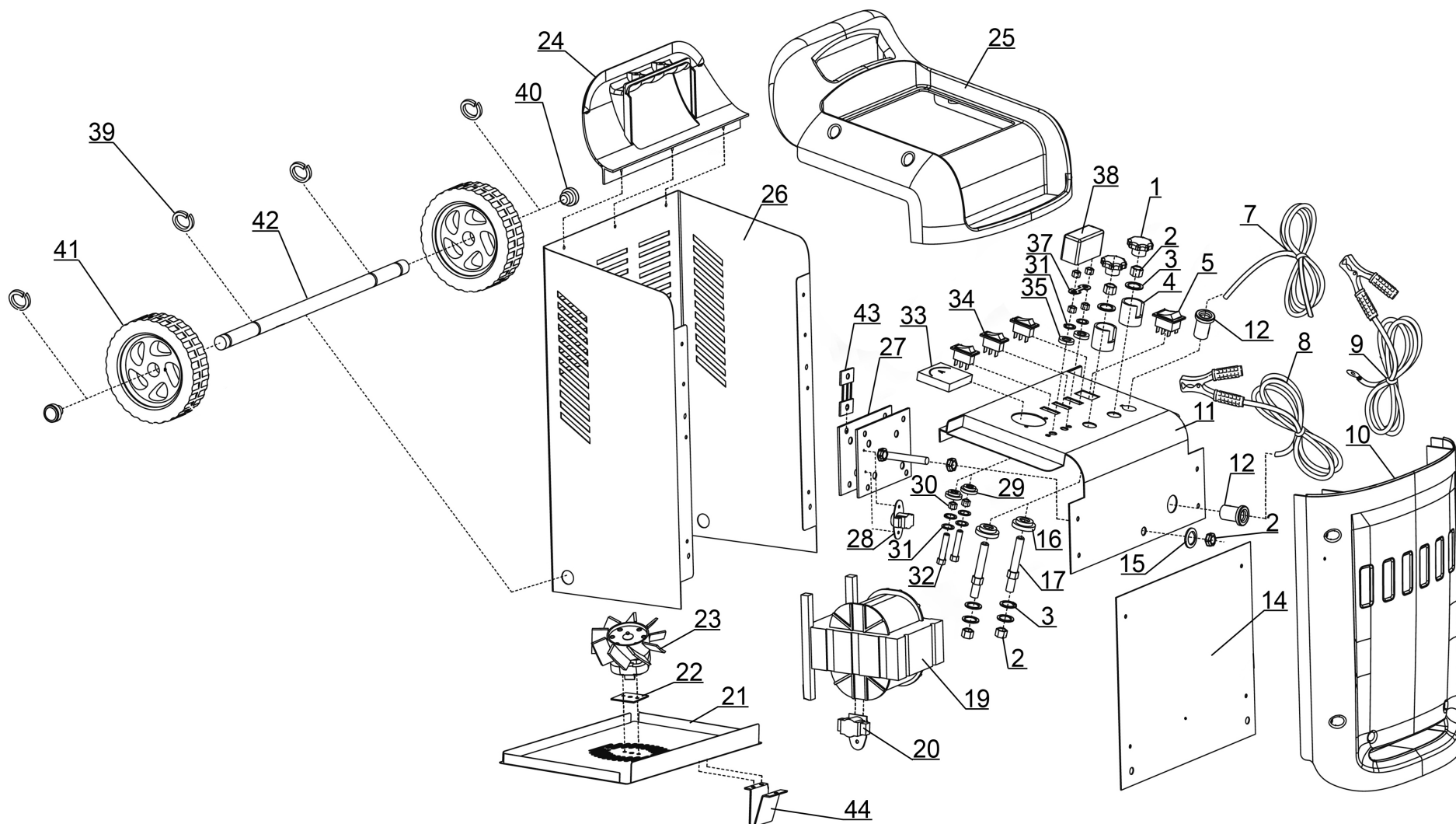




TM

Parts Information:  
**12/24V Starter/Charger 320/45A 230V**  
**Model No: START320**



**NOTE:** It is our policy to continually improve products and as such we reserve the right to alter data, specifications and component parts without prior notice.

There may be alternative versions of this product, please contact us should you require this information.

**IMPORTANT:** No liability is accepted for incorrect use of product. Spare parts must be fitted by a competent person

**WARRANTY:** Guarantee is 12 months from purchase date, proof of which will be required for any claim.

Jack Sealey Ltd t/a Sealey Group, Kempson Way, Suffolk Business Park, Bury St Edmunds, Suffolk, IP32 7AR UK

Jack Sealey (EU) Ltd t/a Sealey Group, Farney Street, Carrickmacross, Co. Monaghan, A81 PK68 Ireland

Tel: 01284 757500 • Email: [sales@sealey.co.uk](mailto:sales@sealey.co.uk) • Web: [www.sealey.co.uk](http://www.sealey.co.uk)



TM

## Parts Information: 12/24V Starter/Charger 320/45A 230V Model No: START320

Item	Part No.	Description	Qty
1	START800.01	Knob, Plastic, OD: 38mm, M6 Threaded Female Fitting	2
2	SN8.S	Steel Nut M8 Zinc	6
3	FWM8.S	Flat Washer M8 Zinc	6
4	START800.04	Terminal Protection Cover	2
5	START420.05	Switch (On/Off) Green Rocker 30A 250V	1
7	START420.07	Power Cord	1
8	START420.08	Negative Cable with Clamp	1
9	START660.09	Positive Cable with Clamp	1
10	START320.10	Front Plastic Panel	1
11	START320.11	Top Panel	1
12	START660.12	Cable Grip	2
14	START420.14	Cover Panel	1
15	START800.15	Serrated Washer M8	1
16	START800.16	Insulating Washer	2
17	START800.17	Terminal Bolt M8	2
19	START320.19	Transformer	1
20	START320.20	Thermostat for Transformer	1
21	START420.21	Bottom Panel	1
22	START420.22	Insulating Plate	1
23	START420.23	Fan (c/w Motor)	1
24	START800.24	Handle Support Panel	1

Item	Part No.	Description	Qty
25	START800.25	Top Plastic Cover	1
26	START420.26	Back Panel	1
27	START320.27	Rectifier	1
28	START320.28	Thermostat for Rectifier	1
29	START800.29	Insulating Washer (A)	2
30	SN6.S	Steel Nut M6 Zinc	2
31	FWM6.S	Flat Washer M6 Zinc	6
32	SS635.S	Hex Head Set Screw M6 x 35mm	2
33	START420.33	Ammeter	1
34	START240.12	Rocker Switch 20A 250V	3
35	START800.35	Insulating Washer (B)	2
37	START360.F	Fuse 110Amp	1
--	START360.F10	Fuse 110Amp (Pack of 10)	1
38	START800.38	Fuse Box	1
39	SWM12.S	Spring Washer M12 Zinc	4
40	START800.40	Axle Cap	2
41	START800.41	Wheel, Fixed, Plastic, c/w Bearings (D:147 W:43 B:12)	2
42	START800.42	Wheel Axle: Solid, Black, Circlip Fittings (L:460mm D:12mm)	1
43	START660.43	Fusible Link	1
44	START800.44	Foot	1

**NOTE:** It is our policy to continually improve products and as such we reserve the right to alter data, specifications and component parts without prior notice. There may be alternative versions of this product, please contact us should you require this information.

**IMPORTANT:** No liability is accepted for incorrect use of product. Spare parts must be fitted by a competent person

**WARRANTY:** Guarantee is 12 months from purchase date, proof of which will be required for any claim.

**Jack Sealey Ltd t/a Sealey Group**, Kempson Way, Suffolk Business Park, Bury St Edmunds, Suffolk, IP32 7AR UK  
**Jack Sealey (EU) Ltd t/a Sealey Group**, Farney Street, Carrickmacross, Co. Monaghan, A81 PK68 Ireland  
**Tel:** 01284 757500 • **Email:** sales@sealey.co.uk • **Web:** www.sealey.co.uk